

HIAB 300 Capacity 30 tm



Product brochure





Powerful with great reliability



The HIAB 300 is powerful and robust

The 30 tonne-metre HIAB 300 is a high capacity crane especially suitable to handle really heavy loads, safely and efficiently. The crane's advanced boom system is made of high tensile steel, which keeps the overall weight down. What's more the HIAB 300 has numerous features designed to improve reliability and minimize maintenance costs. Such as the internationally acclaimed JIC coupling system that assures perfect connection and sealing of the hydraulic hoses. There are also large, adjustable slide pads to ensure less wear on the boom extensions.

A choice to increase comfort

Your HIAB 300 can be ordered with up to six hydraulic extensions, reaching more than 13 metres. If manual boom extensions are added, the HIAB 300 is provided with an outreach of up to 23 metres. It occupies only a minimal amount of space behind your truck cabin, which increases the space available for payload. The crane is delivered with the HIAB Valve 50 and is controlled by levers positioned at the base. As an option you can order your crane with the CombiDrive remote control unit, which provides valuable flexibility when operating your crane. Safety functions are managed by the MiniSPACE intelligence system.

Front runners in boom design

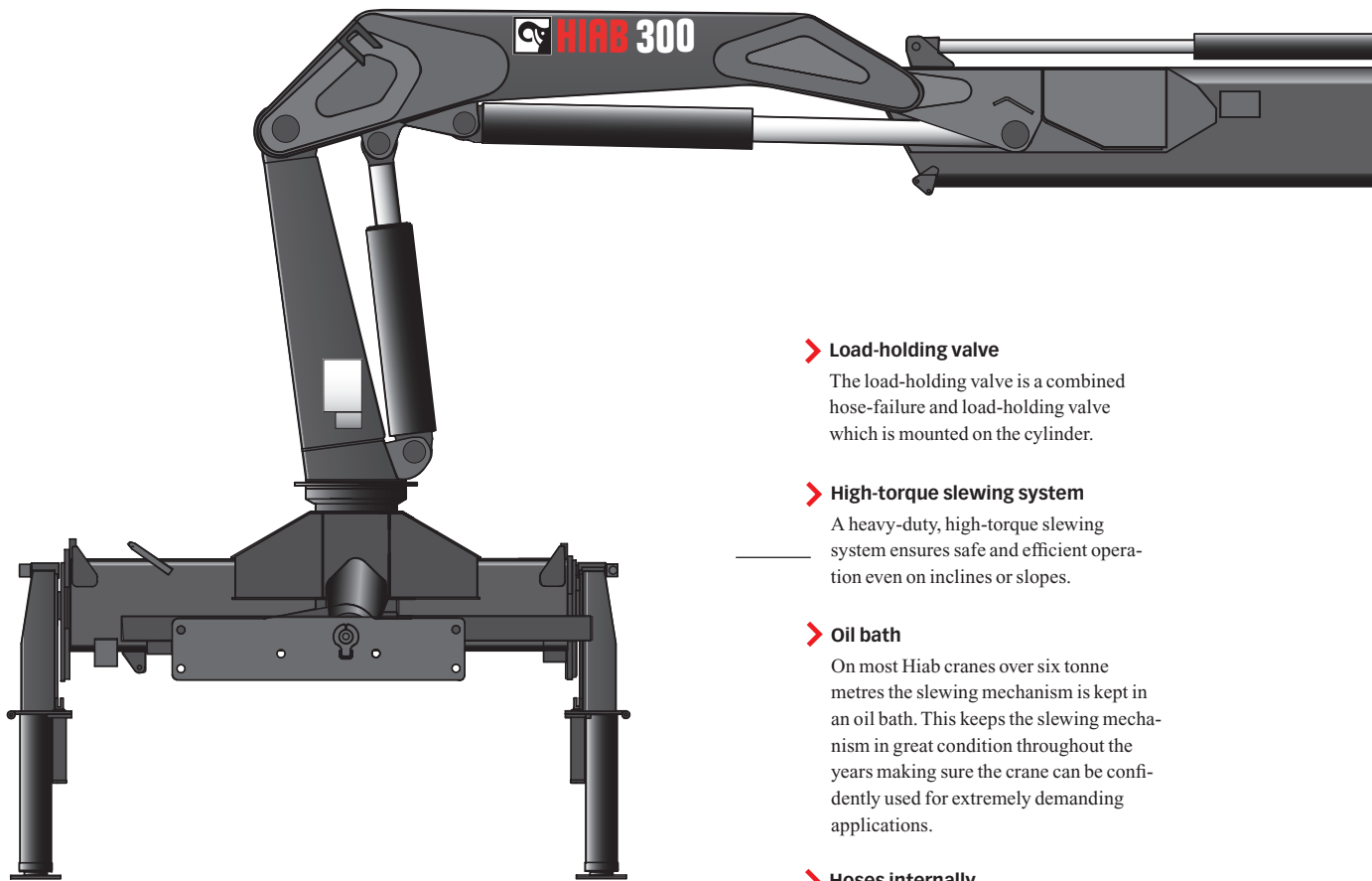
A Hiab crane is built to withstand extreme loading under all kinds of circumstances, in all field conditions. Keeping the boom reliable, tough and sturdy under extreme loading has made Hiab a world leader in crane boom engineering. Taking a closer look at the crane, one can point out a number of features that our customers benefit from.

Hexagonal boom profile

The hexagonal profile used on Hiab booms is a ground-breaking design introduced by Hiab many years ago. It is now standard throughout the market of loader cranes. Even the smallest of Hiab cranes benefit from this design.

Optional side supports

On cranes equipped with an optional hose and pipe kit, side supports are fitted on each boom extension. These supports stabilize the boom laterally and minimize play.



> **Load-holding valve**

The load-holding valve is a combined hose-failure and load-holding valve which is mounted on the cylinder.

> **High-torque slewing system**

A heavy-duty, high-torque slewing system ensures safe and efficient operation even on inclines or slopes.

> **Oil bath**

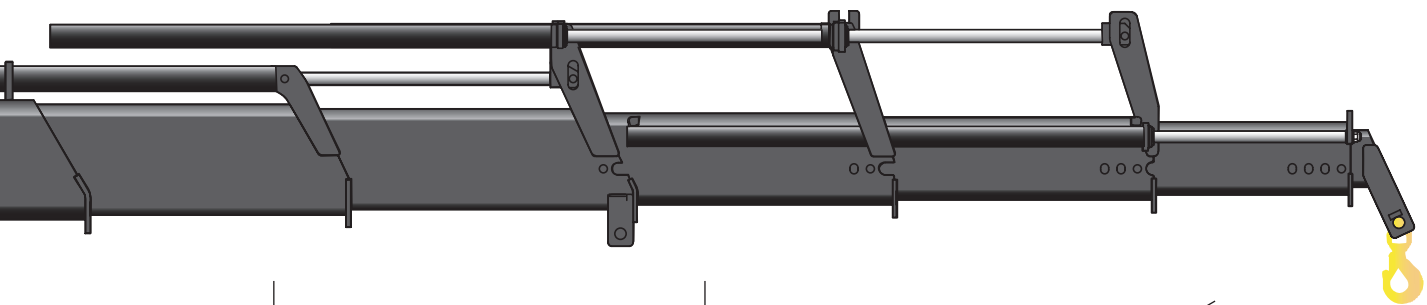
On most Hiab cranes over six tonne metres the slewing mechanism is kept in an oil bath. This keeps the slewing mechanism in great condition throughout the years making sure the crane can be confidently used for extremely demanding applications.

> **Hoses internally**

The hoses are run internally in the crane body and in the outrigger beam, where they are out of harm's way, thus reducing maintenance costs.

> **Hexagonal boom profile**

The hexagonal profile ensures the boom is always in perfect balance, due to its shape and big support surface. The profile also minimizes boom deflection. This reduces maintenance costs and increases efficiency.



> **JIC couplings**

JIC couplings are standard on most Hiab cranes. They assure secure coupling easily, and are still very easy to disconnect for service.

> **Large slide pads**

Large slide pads reduce friction and wear keeping maintenance costs low. Also the boom system needs no greasing, and thus it is kept cleaner than our competitor's boom systems.

> **Attachable tools**

A wide range of attachable tools are available for your Hiab crane. These make sure you can carry out a lot of different tasks.

HIAB 300 Capacity 30 tm

> MiniSPACE intelligence system

The MiniSPACE system intelligently monitors and controls the electronic functions of your crane.

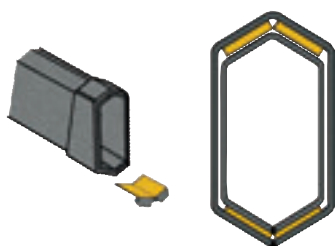
Safety is managed by an Over Load Protection (OLP) function. The OLP also enables you to work in front of the truck cabin, an area that is traditionally not possible to operate in. High boom warning also contributes to the increased safety that Hiab is so well known for.

Automatic Dumping of Oil (ADO) keeps the oil in top condition and thus reduces maintenance costs. This is done by leading the oil straight back into the tank when the crane is running idle.

Further more, the system handles functions primarily used by service personnel such as fault code indication and load cycle data.

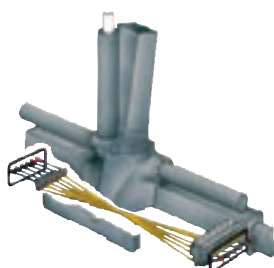
> Valve 50

The HIAB Valve 50 is an extremely well tested design, which offers total reliability and low service costs. It is an open centre valve and can handle a maximum pump flow of approximately 60 litres per minute.



> Large slide pads

The hexagonal profile enables the use of larger slide pads. This makes the extensions move smoother and reduces mechanical wear on the boom.

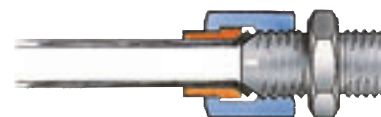


> Cross controls

The Cross Controls are a Hiab unique feature giving you the same lever sequence on either side of the truck, minimizing the risk of human error. Hiab safety measures and user friendly thinking makes life as a crane operator much safer.

> CombiDrive

The HIAB CombiDrive control unit can handle up to 12 proportional functions, thereby controlling all movements with the same precision.



> JIC couplings

JIC couplings are standard on most Hiab cranes. They assure secure coupling easily, and are still very easy to disconnect for service.



